

STURGES
LONDON

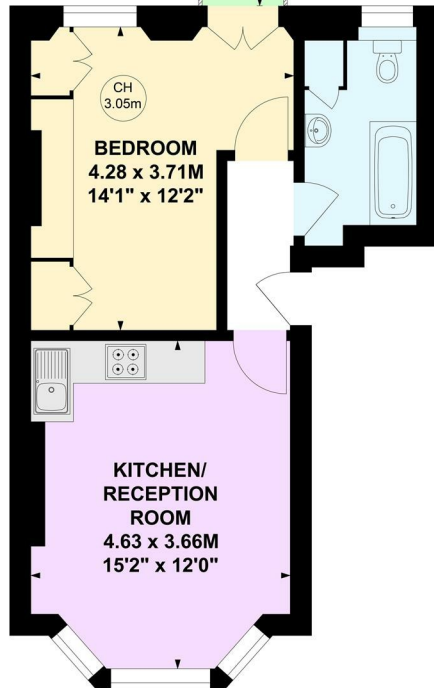
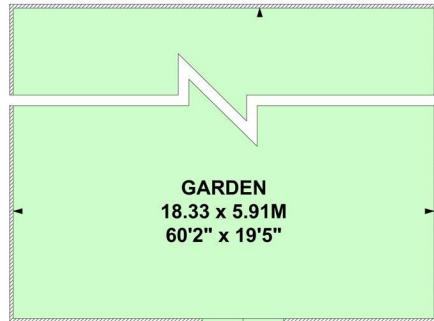
Rostrevor Road, Fulham
£2,250 Per calendar month



Rostrevor Road, SW6

Approximate gross internal area
37.04 sq m / 399 sq ft

Key :
CH - Ceiling Height



Ground Floor

This plan is not to scale and must be used as layout guidance only. All measurements and areas are approximate and should not be relied upon to provide accurate information. This plan must not be relied upon when making property valuations, design considerations or any other such relevant decisions. We accept no responsibility or liability (whether in contract, tort or otherwise) in relation to any loss whatsoever arising from or in connection with any use of this plan or the adequacy, accuracy or completeness of it or any information within it.

Energy Efficiency Rating		
	Current	Potential
Very energy efficient - lower running costs		
(92 plus) A		
(81-91) B		
(69-80) C		76
(55-68) D	62	
(39-54) E		
(21-38) F		
(1-20) G		
Not energy efficient - higher running costs		
England & Wales	EU Directive 2002/91/EC	

Local Authority: London Borough of Hammersmith & Fulham
Council Tax Band: D

Lease: Add text here
Service Charges: Add text here
Ground Rent: Add text here

For more information, please contact:

(Tel) 020 3393 2002
(Email) hello@sturgeslondon.co.uk

668 Fulham Road, Parsons Green, London, SW6 5RX

sturgeslondon.co.uk

Agents Note: Whilst every care has been taken to prepare these particulars, they are for guidance purposes only. All measurements are approximate and for general guidance purposes only and whilst every care has been taken to ensure accuracy, they should not be relied upon and potential buyers/tenants are advised to recheck the measurements.